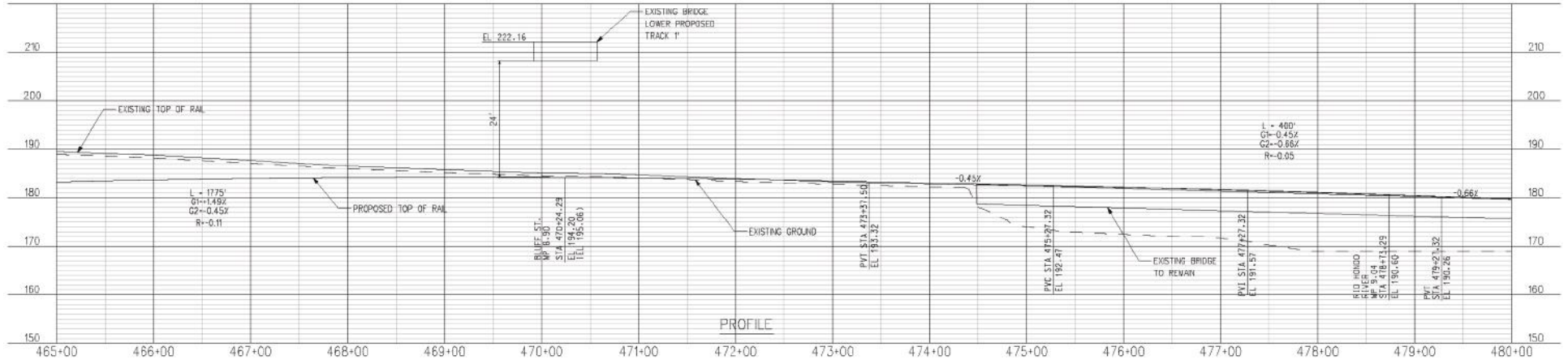
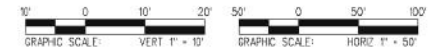
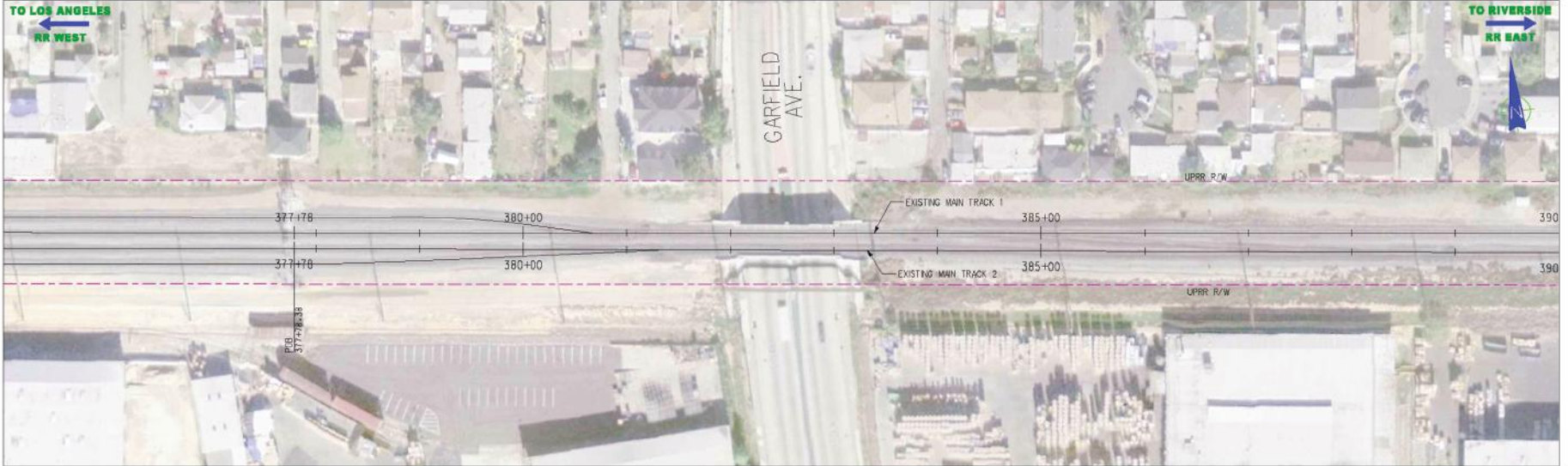


PLAN

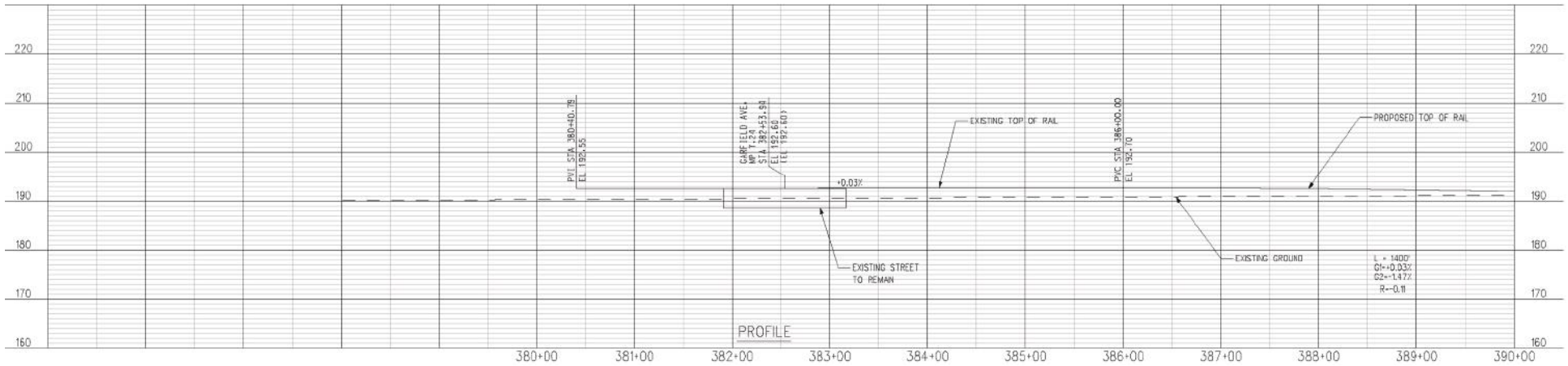
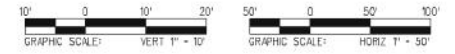


PROFILE

Source: JL Patterson & Associates, Inc.



PLAN

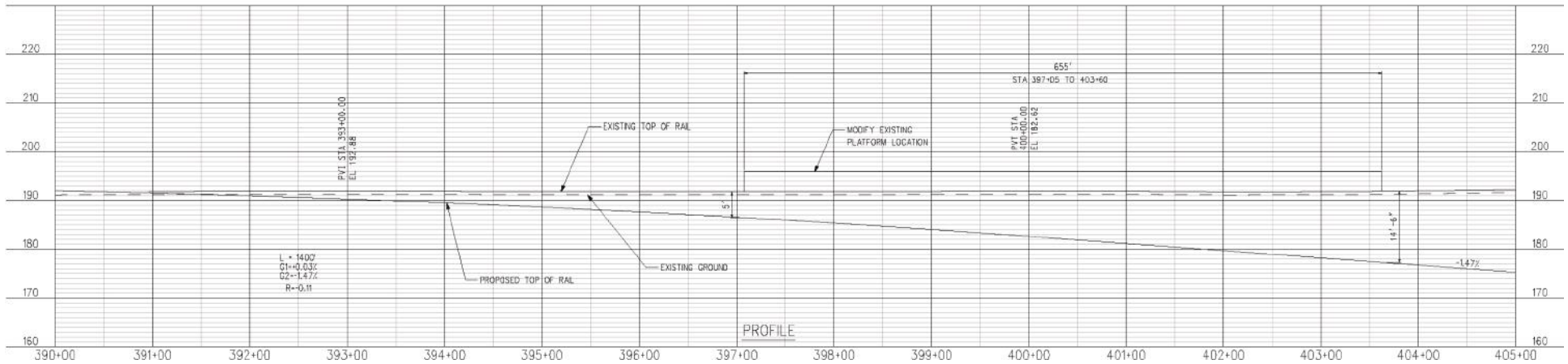


PROFILE

Source: JL Patterson & Associates, Inc.

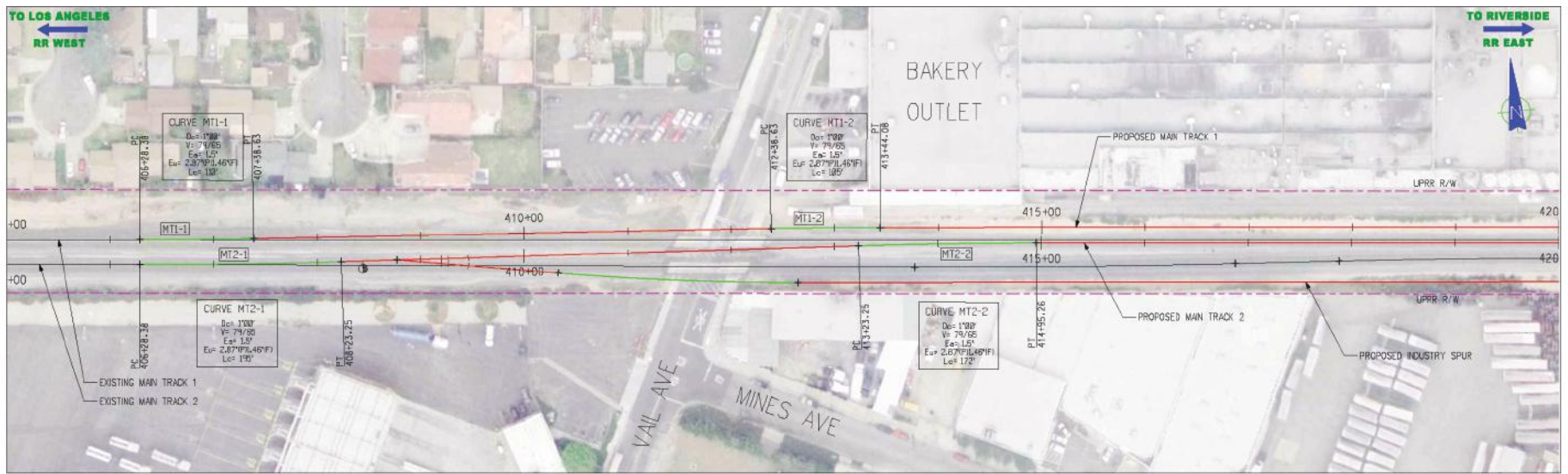


PLAN

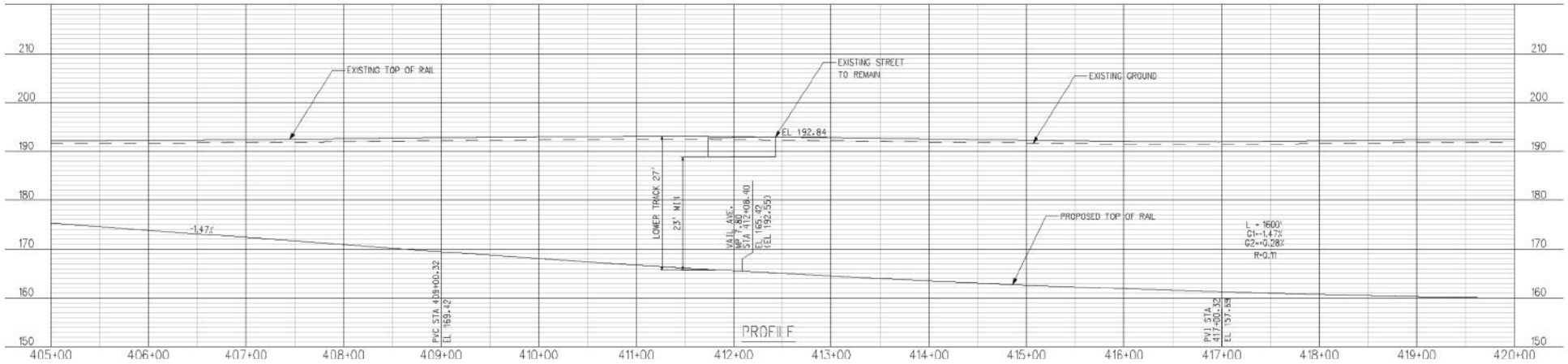
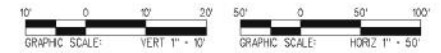


PROFILE

Source: JL Patterson & Associates, Inc.



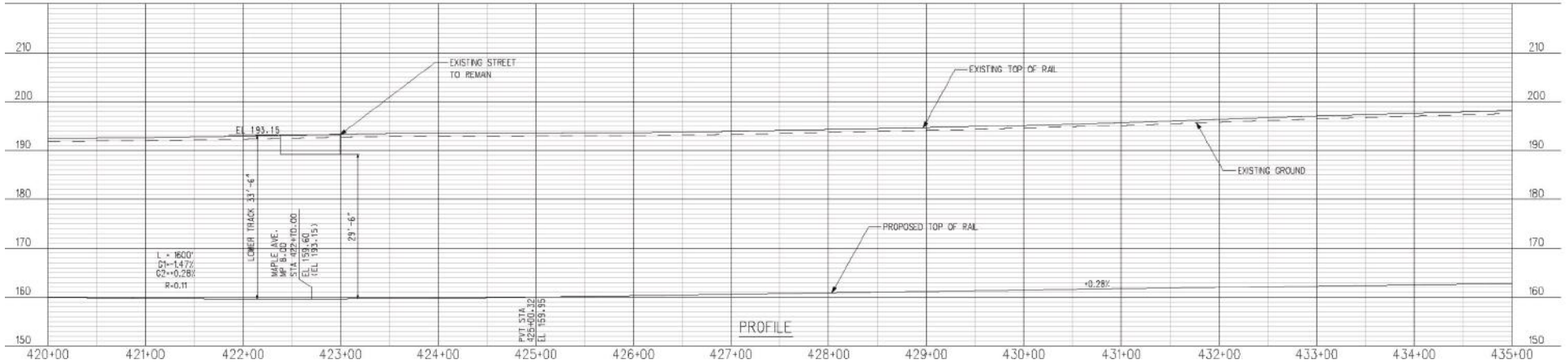
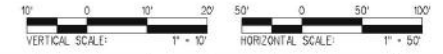
PLAN



Source: JL Patterson & Associates, Inc.



PLAN

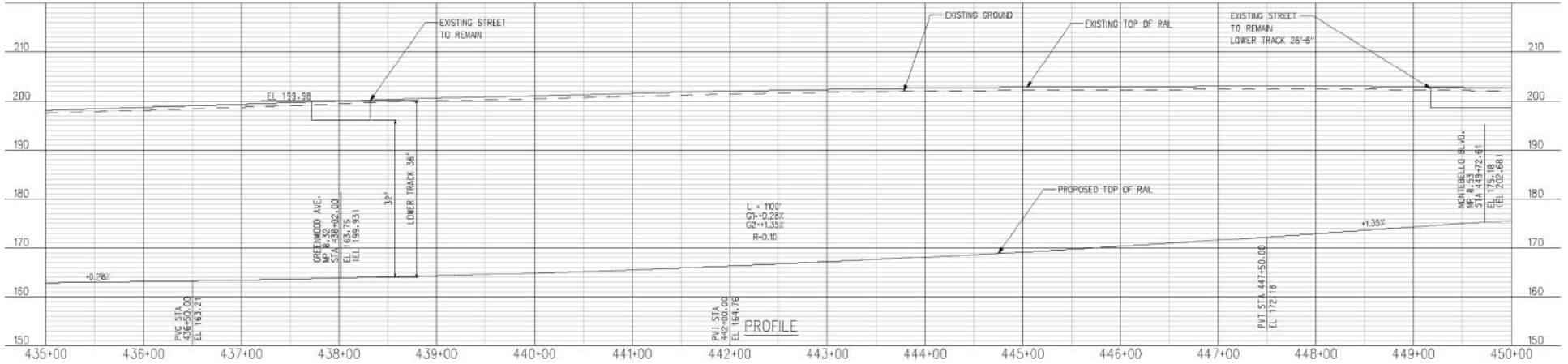
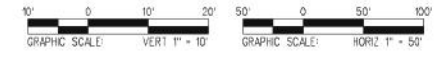


PROFILE

Source: JL Patterson & Associates, Inc.



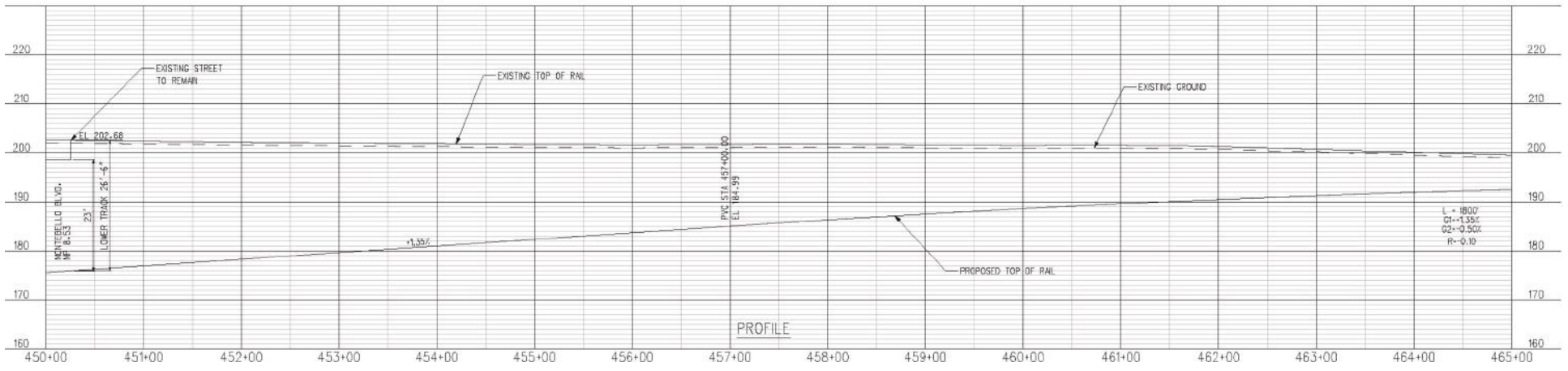
PLAN



Source: JL Patterson & Associates, Inc.

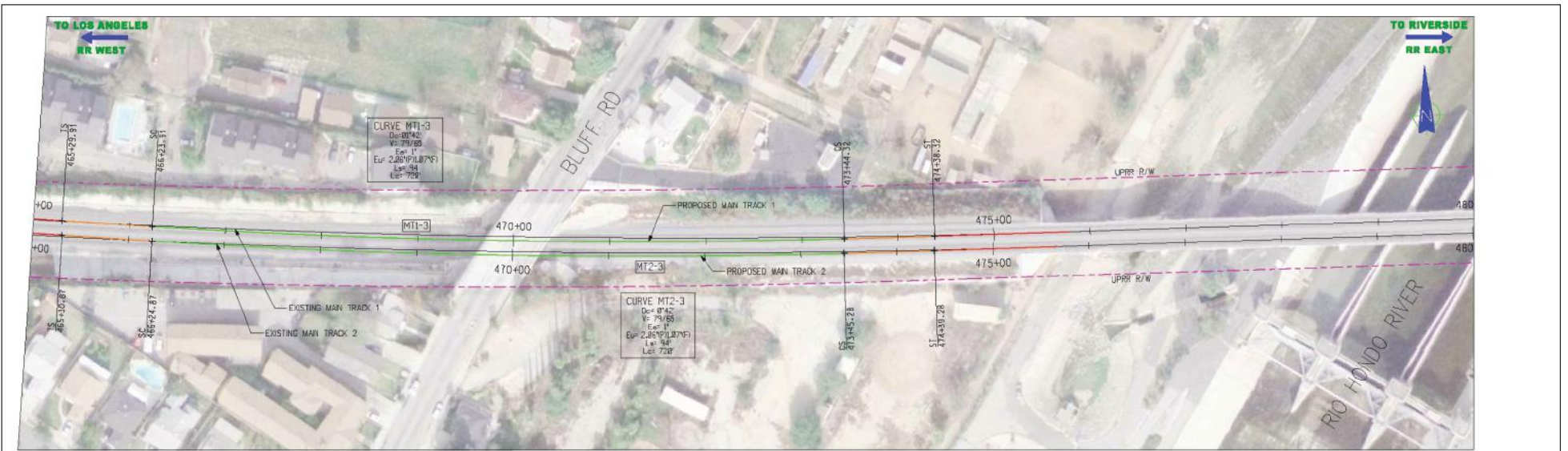


PLAN

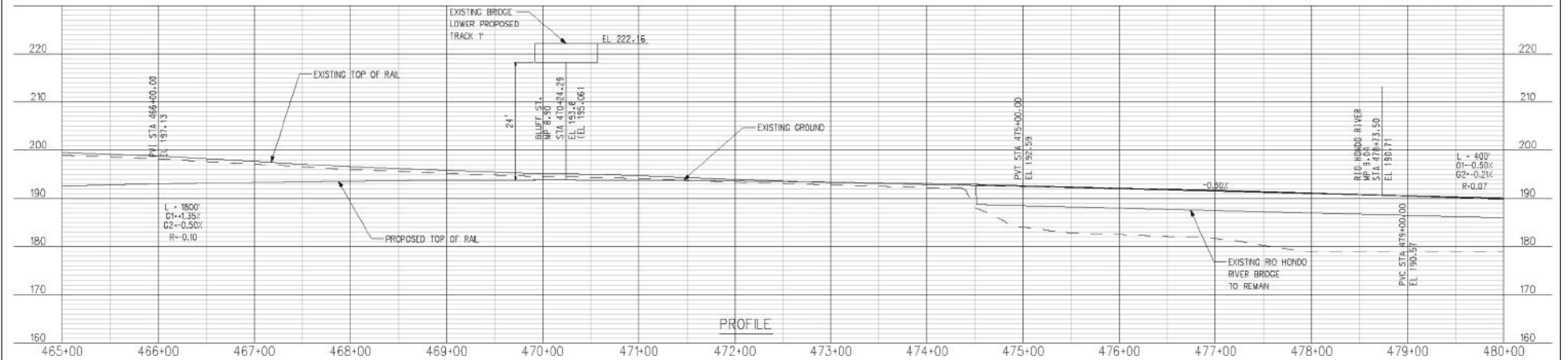
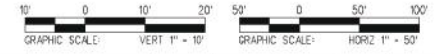


PROFILE

Source: JL Patterson & Associates, Inc.



PLAN

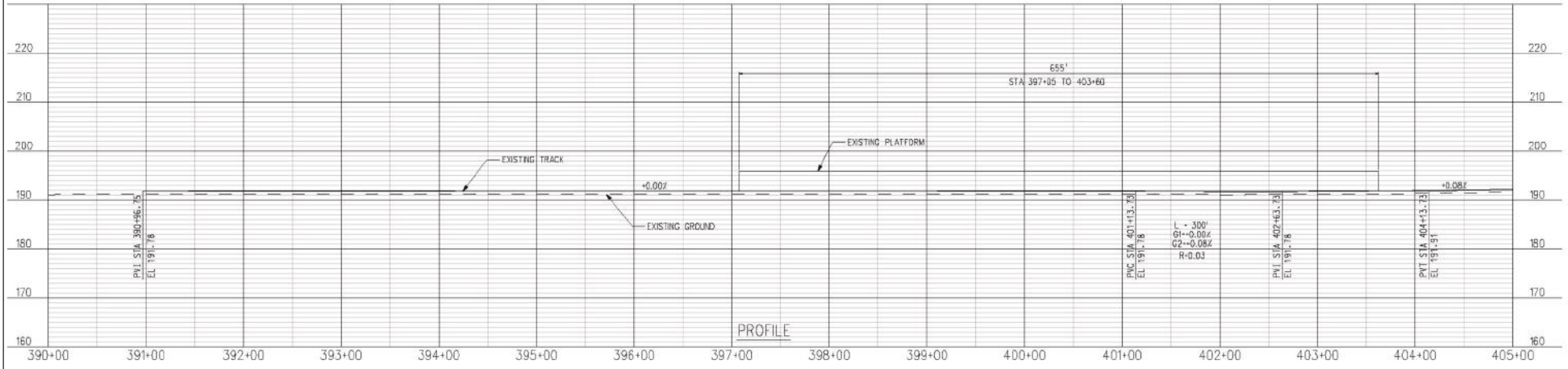
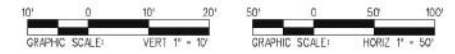


PROFILE

Source: JL Patterson & Associates, Inc.

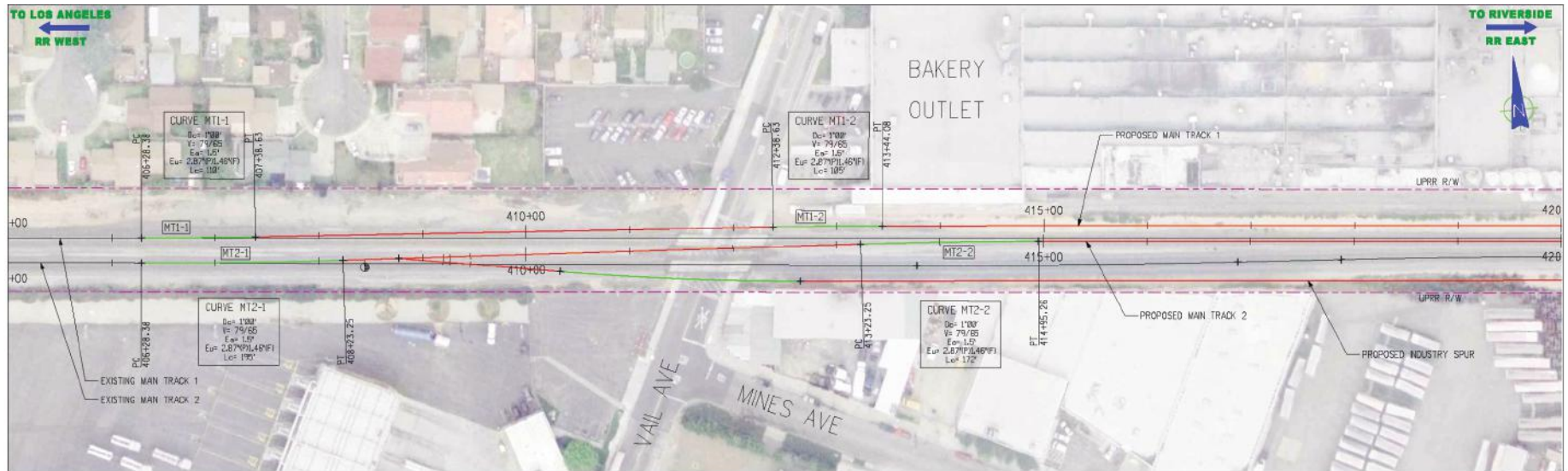


PLAN

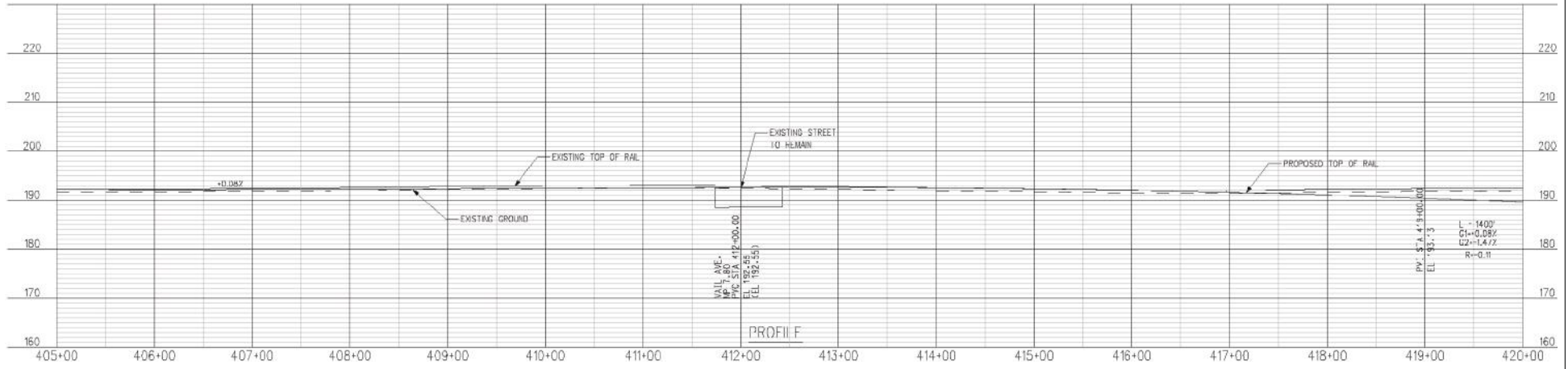


PROFILE

Source: JL Patterson & Associates, Inc.



PLAN

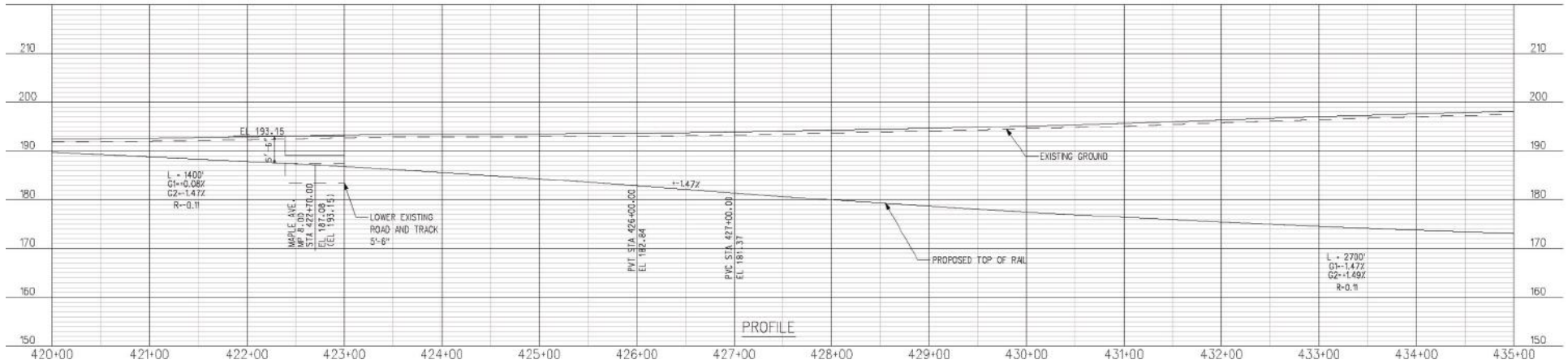
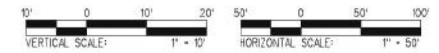


PROFILE

Source: JL Patterson & Associates, Inc.



PLAN

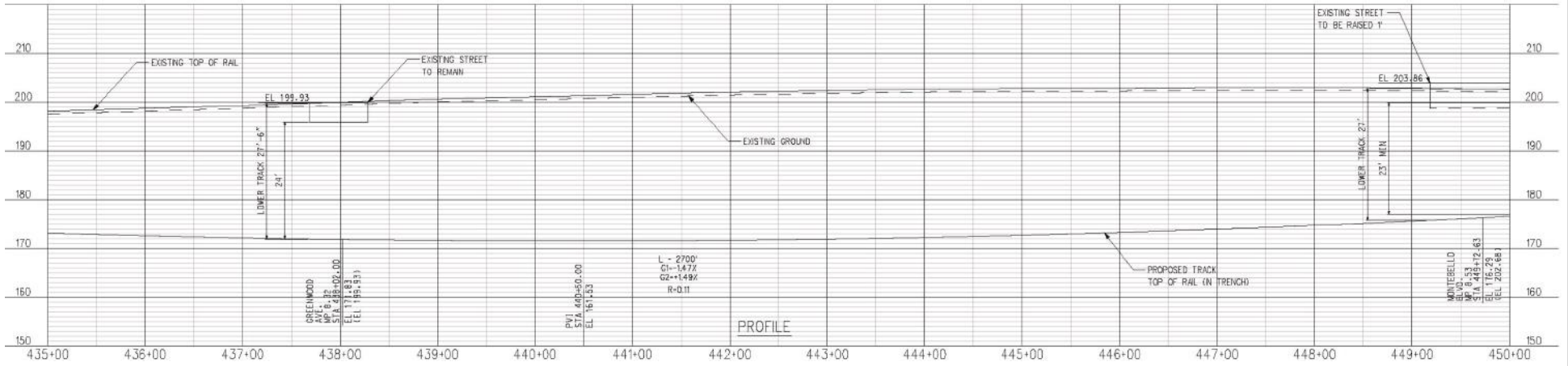
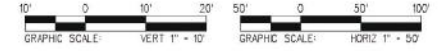


PROFILE

Source: JL Patterson & Associates, Inc.



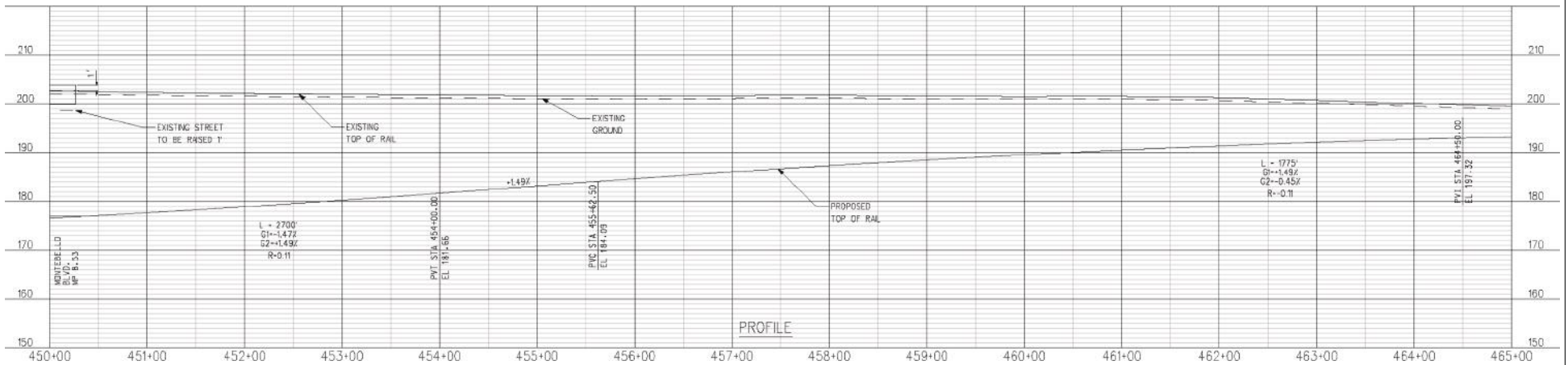
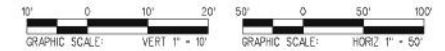
PLAN



Source: JL Patterson & Associates, Inc.

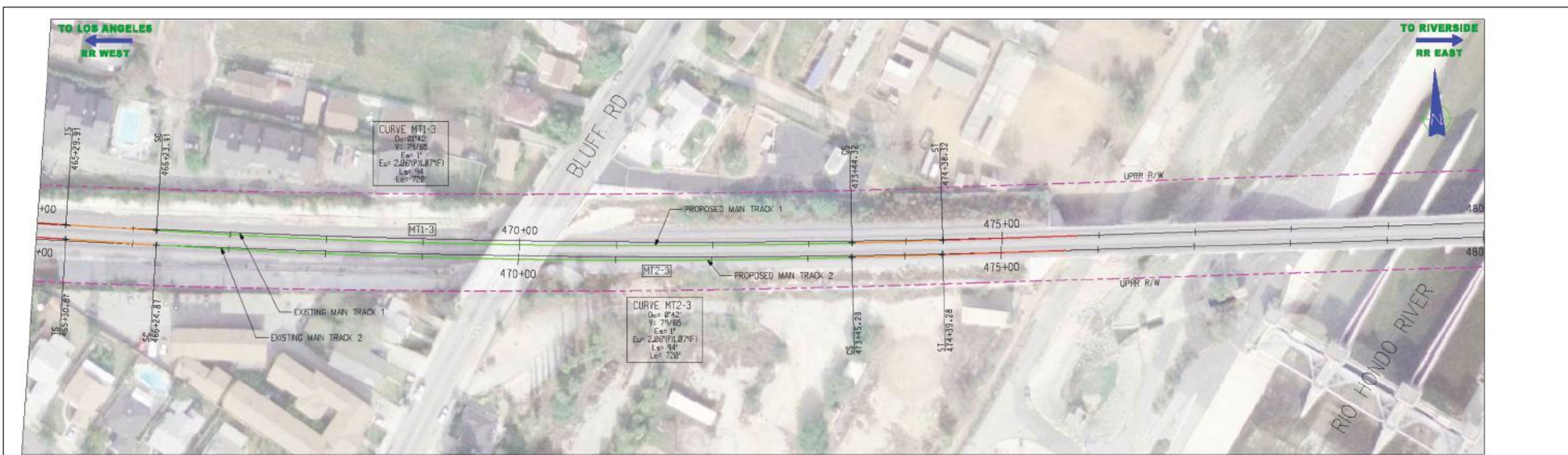


PLAN

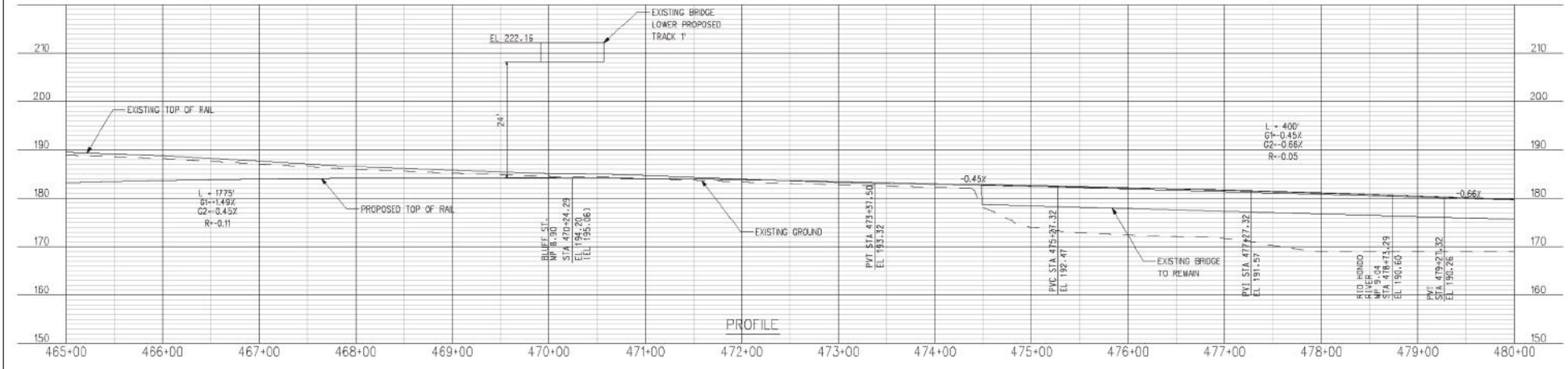


PROFILE

Source: JL Patterson & Associates, Inc.

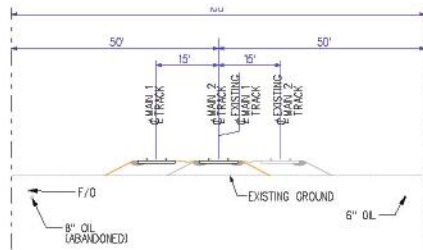


PLAN

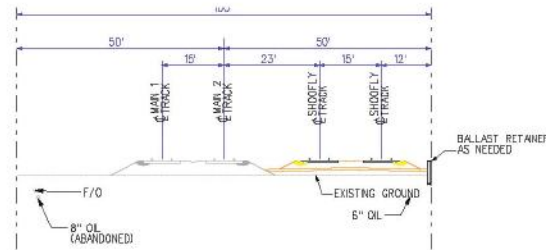


PROFILE

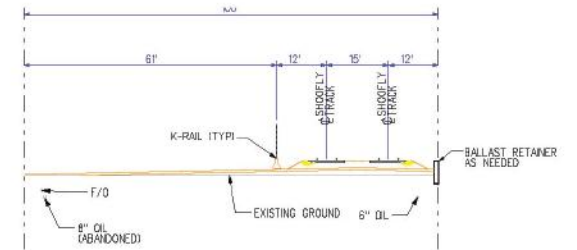
Source: JL Patterson & Associates, Inc.



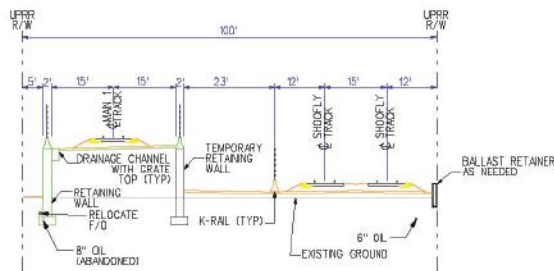
1 SHIFTS TRACKS FOR SHOOFLY TRACKS



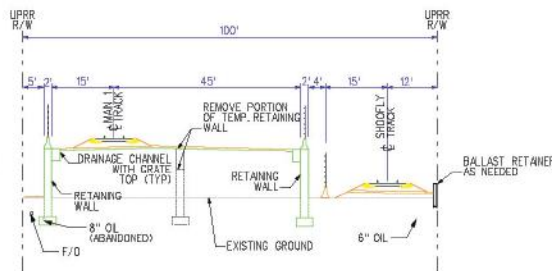
2 CONSTRUCT SHOOFLY TRACKS



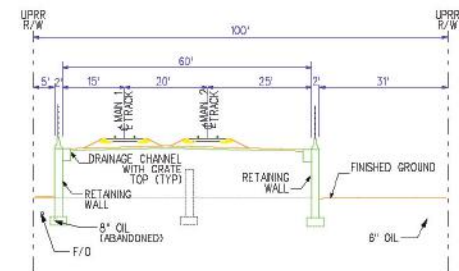
3 MOVE TRAFFIC TO SHOOFLY



**4 CONSTRUCT NORTHERN RETAINING WALL
CONSTRUCT TEMP. SOUTHERN RETAINING WALL
CONSTRUCT TRACK (1) ON STRUCTURE**



**5 MOVE TRAFFIC TO TRACK (1) ON STRUCTURE
REMOVE SHOOFLY (1)
CONSTRUCT SOUTHERN RETAINING WALL
CUT OFF TEMP. RETAINING WALL**



**6 CONSTRUCT 2ND TRACK
MOVE TRAFFIC TO STRUCTURE
REMOVE SHOOFLY**

Source: JL Patterson & Associates, Inc.

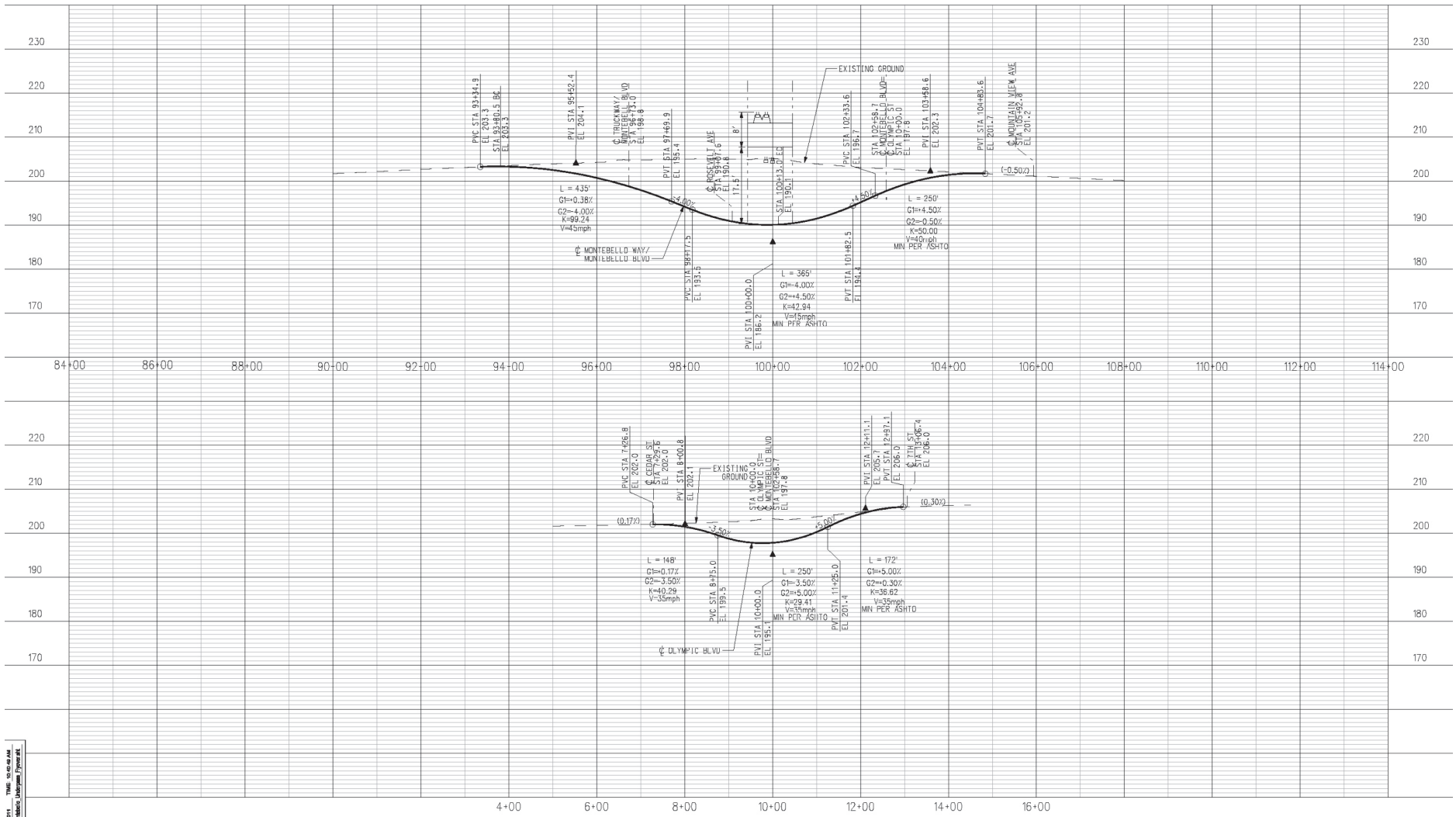


Source: JL Patterson & Associates, Inc.

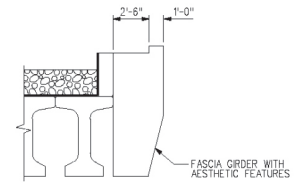
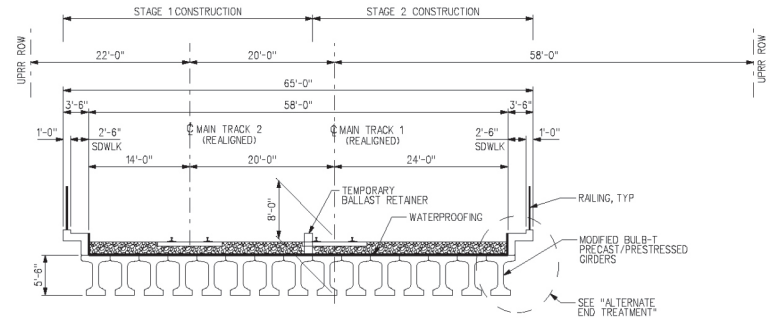
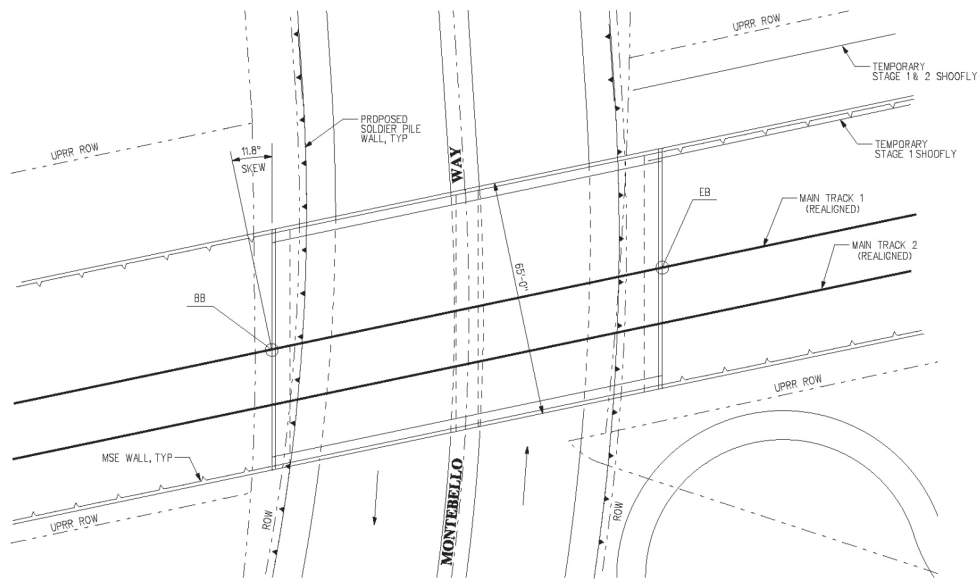


Source: JL Patterson & Associates, Inc.

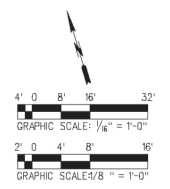
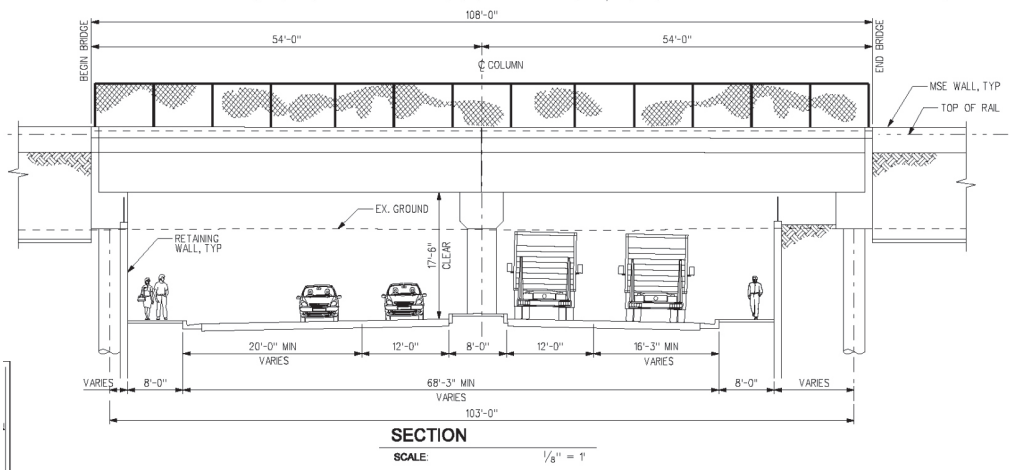
DATE: TIME: 02:05:46 AM
DRAWN: J. Patterson



Source: JL Patterson & Associates, Inc.



ALTERNATE END TREATMENT



Source: JL Patterson & Associates, Inc.