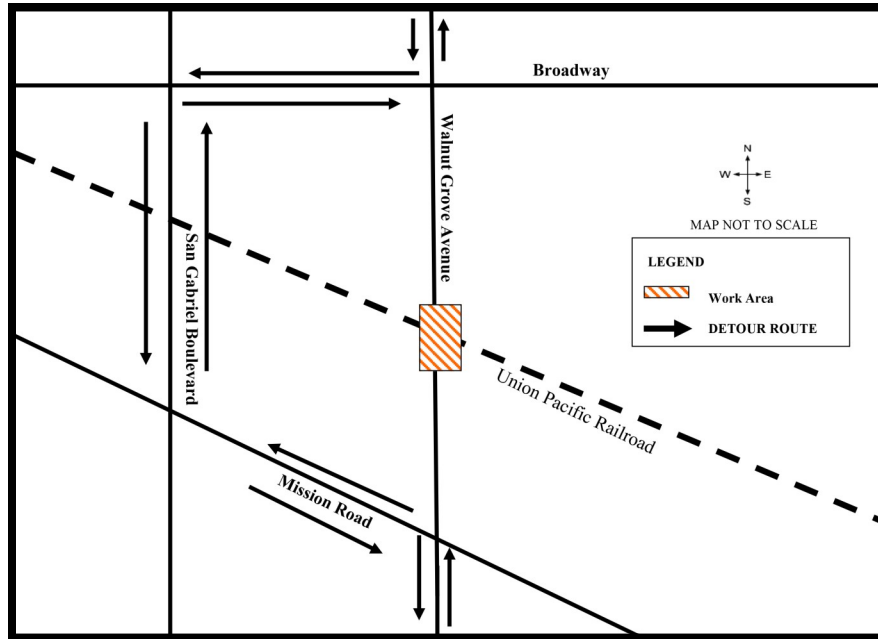




****CONSTRUCTION ALERT 8/2/17–9/11/17****
WALNUT GROVE AVENUE TO BE CLOSED AT RAILROAD CROSSING FOR CONSTRUCTION



WHAT

Alameda Corridor-East Construction Authority (ACE) contractor will close the Walnut Grove Avenue railroad crossing to reprofile the roadway as part of the San Gabriel Trench project.

WHAT TO EXPECT/WHEN

Northbound and southbound traffic lanes will be closed to vehicular traffic at the railroad crossing on Walnut Grove Avenue beginning Wednesday, August 2, 2017 through Monday, September 11, 2017. Access for local residents and businesses will be maintained at all times. Pedestrian access at the railroad crossing will be available. Motorists and pedestrians should use San Gabriel Boulevard as a detour (see map above) and are urged to exercise caution while in the vicinity of the construction area. Most work will occur between 7 a.m. and 5 p.m. Noise, dust and vibration will be monitored for compliance with applicable limits.

RECOMMENDED DETOUR ROUTE

From northbound Walnut Grove Avenue: Turn left onto Mission Road and proceed west toward San Gabriel Boulevard. Turn right onto San Gabriel Boulevard, proceed north, and turn right on Broadway. Turn left onto Walnut Grove Avenue and proceed north. **From southbound Walnut Grove Avenue:** Turn right onto Broadway and proceed west toward San Gabriel Boulevard. Turn left onto San Gabriel Boulevard, proceed south, and turn left on Mission Road. Turn right onto Walnut Grove Avenue and proceed south.

Para información o preguntas, por favor llame al teléfono directo o visite el sitio web en:

如有疑問或需要索取工程最新資料，請致電輔助熱線或參閱工程網頁

**For the most up-to-date information or questions, please call or visit:
(888) ACE-1426 (Available 24/7) or www.theaceproject.org**

In case of an emergency, please contact 9-1-1

Thank you for your patience and cooperation...At ACE, it's Safety First!

*Note: Construction is a dynamic process and information is subject to change without notice.
Work activity is subject to weather conditions.*