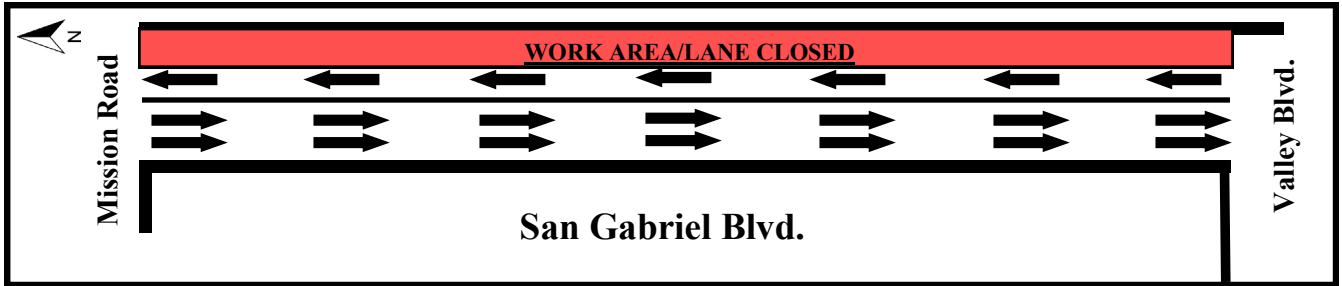




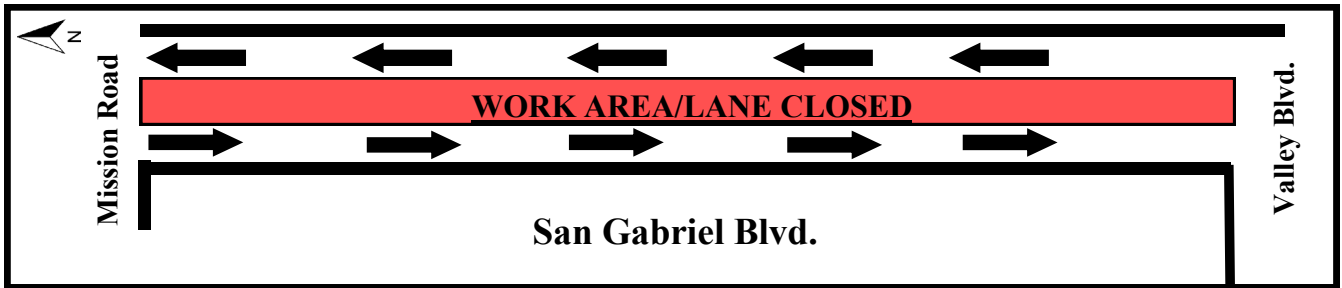
CONSTRUCTION ALERT: 6/26/17-7/21/17

TEMPORARY TRAFFIC LANE IMPACTS ON SAN GABRIEL BLVD. BETWEEN MISSION RD. AND VALLEY BLVD. FOR PAVEMENT REHABILITATION

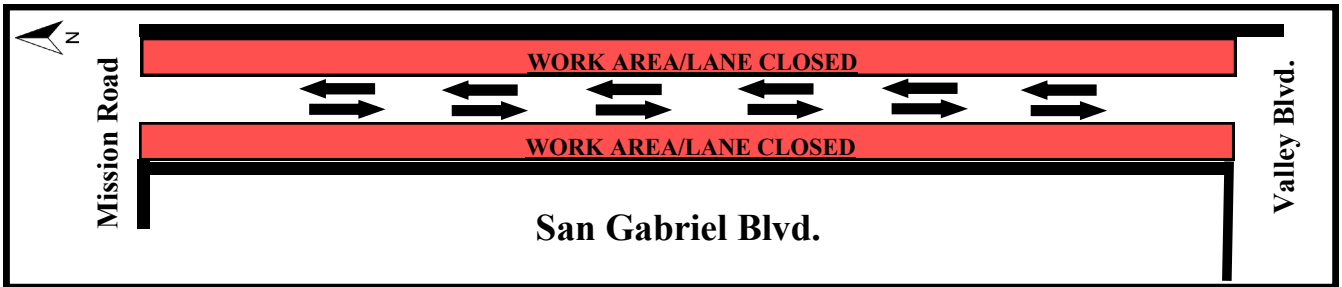
PHASE 1



PHASE 2



PHASE 3



Beginning **Monday, June 26, 2017** to **Friday, July 21, 2017**, a contractor for the ACE Construction Authority will remove and replace the pavement along San Gabriel Blvd. from Mission Rd. to Valley Blvd. Northbound and southbound traffic lanes on San Gabriel Blvd. will be intermittently closed for the pavement rehabilitation work. **The street will remain open and at least one lane of traffic in each direction will be maintained at all times.** Pedestrian access will remain available. Driveway access and street parking may be impacted. Please obey parking signs. Most work will occur weekdays between 7:00 p.m. and 7:00 a.m. Motorists and pedestrians are encouraged to obey posted signs and exercise caution. Noise, dust and vibration may be noticeable, and will be monitored for compliance with applicable limits.

Para información o preguntas, por favor llame al teléfono directo o visite el sitio web en:

如有疑問或需要索取工程最新資料，請致電輔助熱線或參閱工程網頁

**For the most up-to-date information or questions, please call or visit:
(888) ACE-1426 (Available 24/7) or www.theaceproject.org**

In case of an emergency, please contact 9-1-1

Thank you for your patience and cooperation...At ACE, it's Safety First!

*Note: Construction is a dynamic process and information is subject to change without notice.
Work activity is subject to weather conditions.*