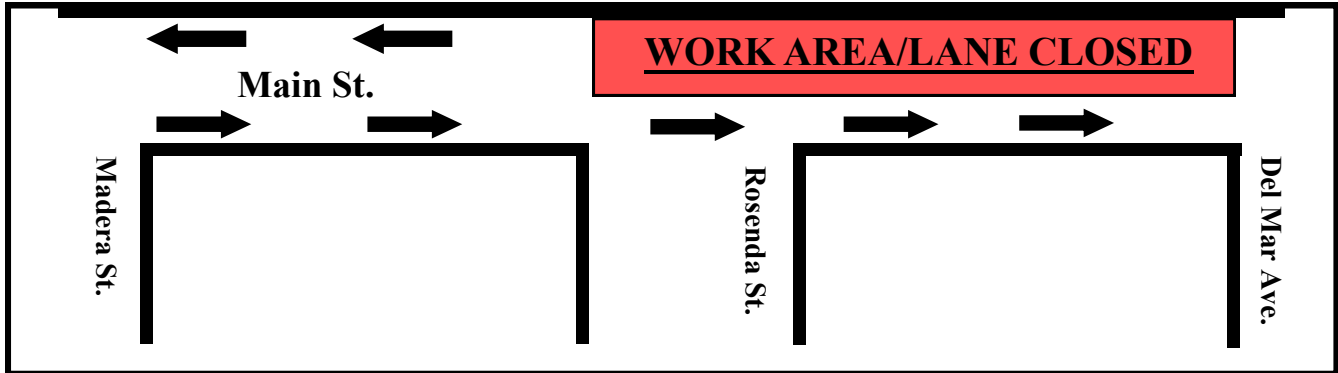
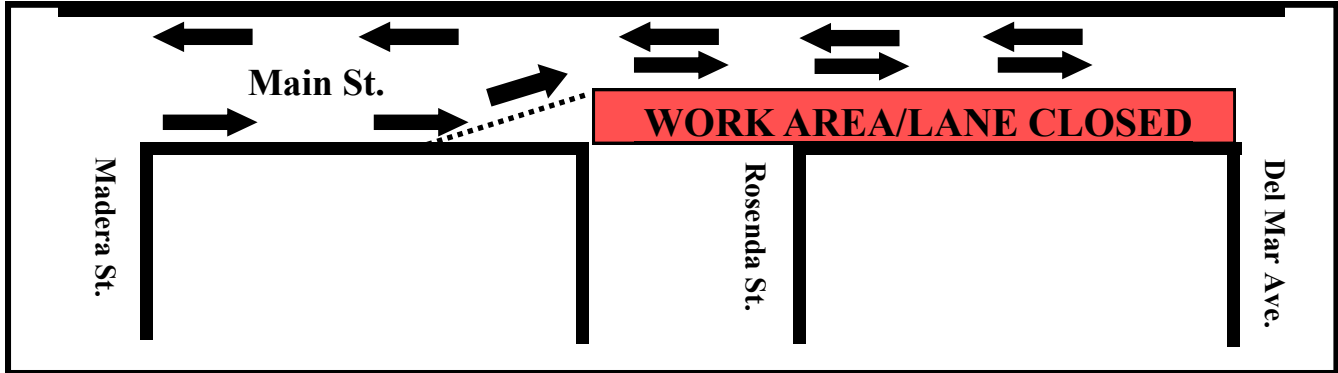


CONSTRUCTION ALERT: 4/24/17-5/12/17
TEMPORARY TRAFFIC LANE IMPACTS ON MAIN STREET
BETWEEN DEL MAR AVENUE AND ROSENDA STREET
FOR PAVEMENT REHABILITATION

PHASE 1



PHASE 2



Beginning **Monday, April 24, 2017** to **Friday, May 12, 2017**, contractor will remove and replace the pavement along Main Street from Del Mar Avenue to Rosenda Street. Westbound and eastbound traffic lanes on Main Street will be intermittently closed for the pavement rehabilitation work. **The street will remain open and at least one lane of traffic will be maintained at all times.** Driveway access might be impacted during work hours. Pedestrian access will be available. Street parking will be impacted (please follow parking signs). Most work will occur weekdays between 7:00 a.m. and 7:00 p.m. Motorists and pedestrians are encouraged to follow detour routes, obey posted signs and exercise caution. Noise, dust and vibration may be noticeable, and will be monitored for compliance with applicable limits.

Para información o preguntas, por favor llame al teléfono directo o visite el sitio web en:

如有疑問或需要索取工程最新資料，請致電輔助熱線或參閱工程網頁

**For the most up-to-date information or questions, please call or visit:
(888) ACE-1426 (Available 24/7) or www.theaceproject.org**

In case of an emergency, please contact 9-1-1

Thank you for your patience and cooperation...At ACE, it's Safety First!

*Note: Construction is a dynamic process and information is subject to change without notice.
Work activity is subject to weather conditions.*