

New San Gabriel closures begin Monday for Alameda Corridor-East project

By [Lauren Gold](#), Pasadena Star-News

Posted: 10/08/14, 8:02 PM PDT | Updated: 3 mins ago

[0 Comments](#)

SAN GABRIEL >> Residents and businesses are gearing up for the next major phase of construction in the Alameda Corridor-East's San Gabriel Trench Project, which will bring full closure of Mission Road starting Monday.

This next phase of the trench project, which will ultimately lower the railroad tracks below the street, will include bridge construction at the city's four railroad crossings. The crossing at Mission Road will close Monday and reopen in April.

"The San Gabriel Trench Project has entered its next most significant phase with construction activity focused on building the bridges at the four crossings," ACE Construction Authority spokesman Paul Hubler said. "We appreciate the patience of the community as we construct this important project."

San Gabriel Boulevard will be reduced to one lane in each direction, as it has been for months, for bridge construction in two parts. After this first phase of bridge construction, the Del Mar Avenue and Ramona Avenue crossings will be next in line for closures. Hubler said no two adjacent railroad crossings will be closed at the same time so drivers have alternate routes around construction closures.

Ongoing sewer work closing down Mission Drive in front of City Hall and one lane in each direction on Ramona Street will continue through the end of the year.

Councilwoman Juli Costanzo, an ACE board member, said the closures will affect residents but said she was hopeful that active communication would help ease the burden.

"Of course it is going to be disruptive, you have to rethink things of how you are getting from the north to the south. Nobody knows that better than me because I work on Valley Boulevard and I live south of Las Tunas," Costanzo said. "But there's a lot of effort being put into getting the word out and disseminating all the information to the public."

Many businesses raised complaints earlier this year about the ACE construction interfering with their businesses and residents have complained about traffic backing up. But, Costanzo said, ACE has worked hard to make the situation as painless as possible. There is now a 24 hour help line, 888-ACE-1426, and ACE has established an office in the city, 405 S. Del Mar Ave., to help inform residents and deal with complaints.

“I think initially, as with anything, there were growing pains,” Costanzo said. “But now it’s more the positive than the negative.”

ACE construction in San Gabriel began in 2012 and the project is scheduled for completion in 2017. The bridge construction phase should be completed by next year and workers will then begin digging the trench.

Ann Tardino, owner of Autunno Catering on Mission Road just north of City Hall, agreed that ACE has been good at informing businesses of construction activity and road closures. ACE has purchased advertisements for businesses affected by the closures and has place signs up notifying passersby that businesses are still open.

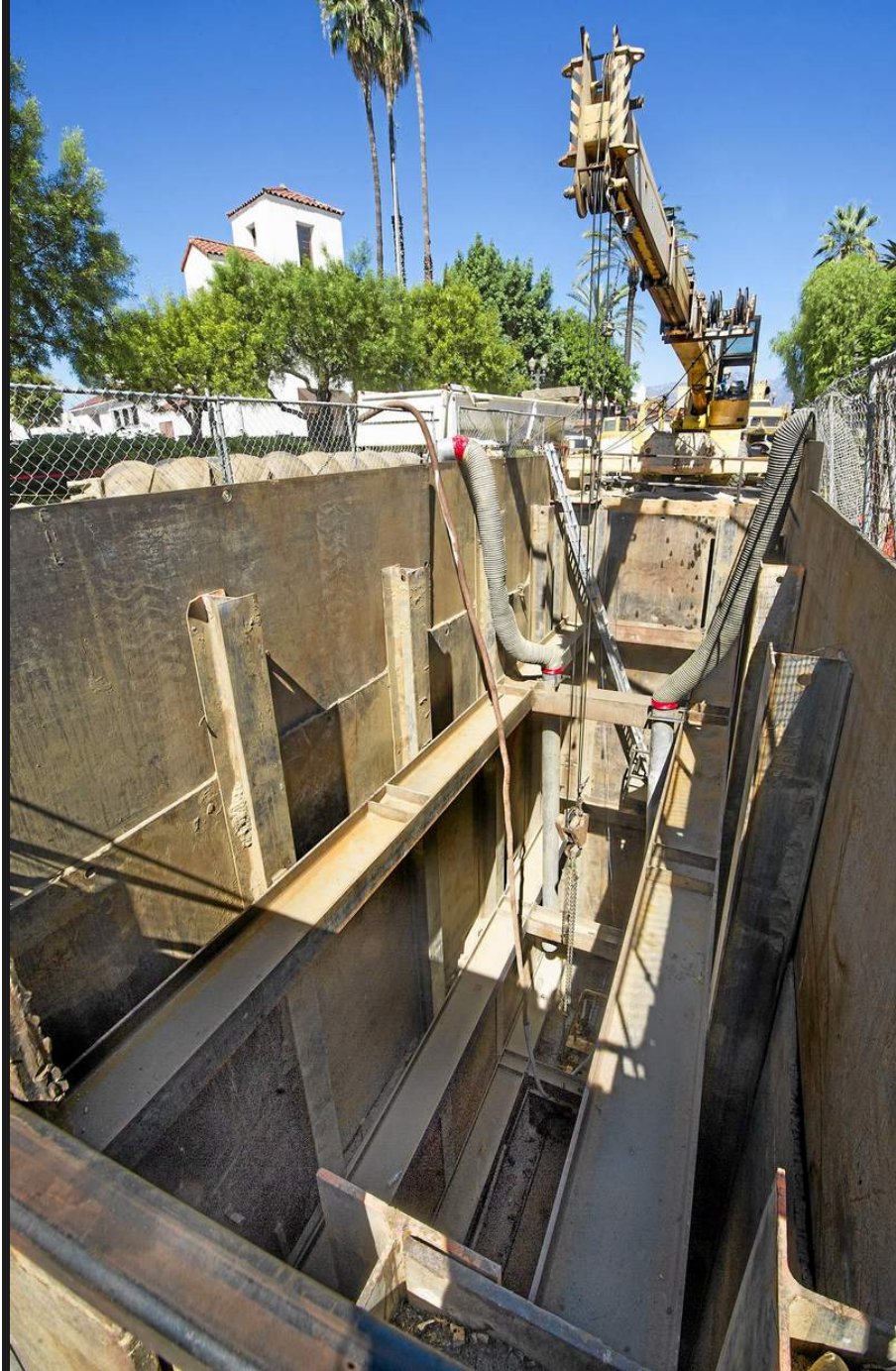
“Both the city and the ACE project have been doing the best they can to have proper detours out and to warn us,” Tardino said. “I don’t see it as being anything difficult at all. Quite frankly, waiting for the train is worse than waiting for the construction to be complete.”

Councilman Jason Pu said the end result will be worth the years of construction.

“The important thing for business and residents to keep in mind is the light at the end of the tunnel, which is the completed project,” Pu said. “That should definitely help with congestion, air quality and noise.”

For more information and a map of current closures, visit www.theaceproject.org/san_gabriel_trench.php.







[See larger or additional photos here](#)

